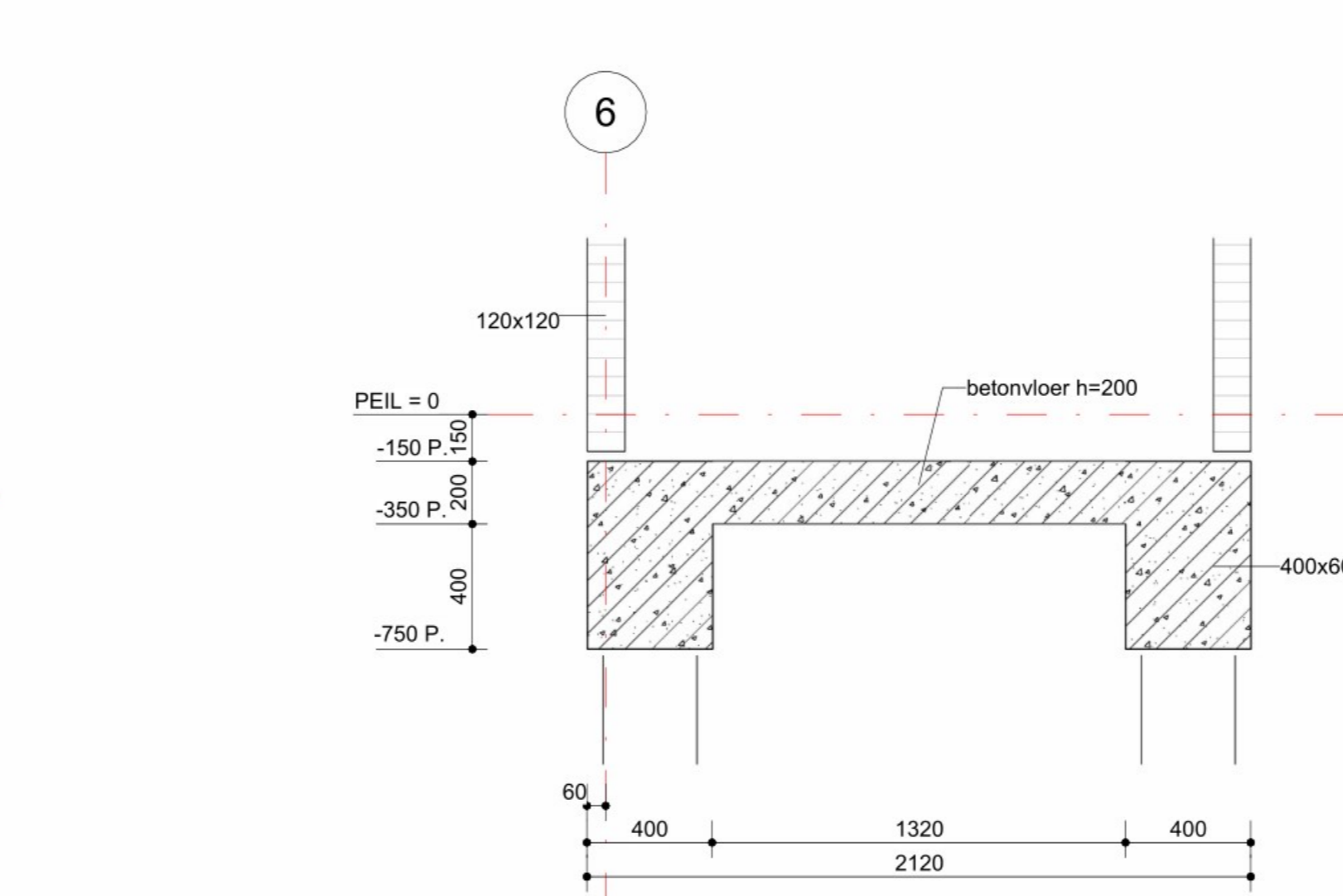
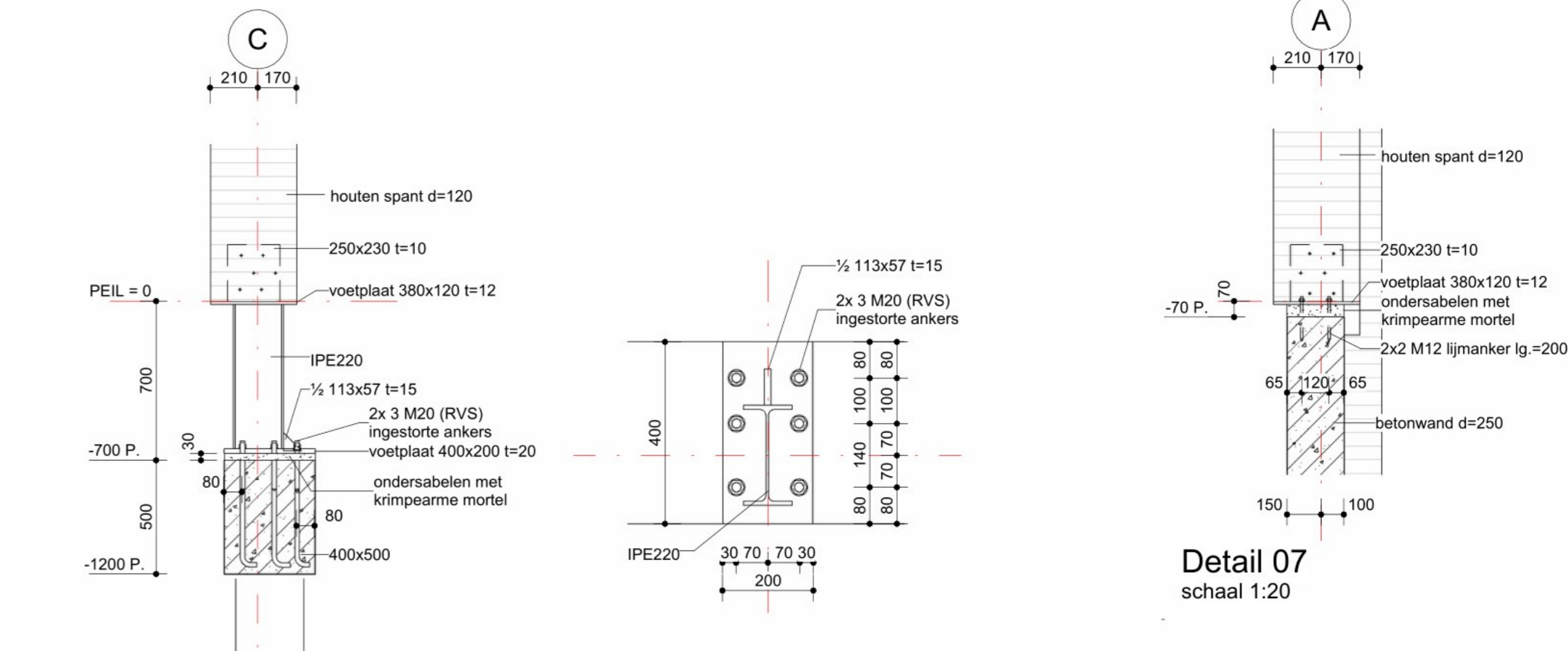


Funderingsplan

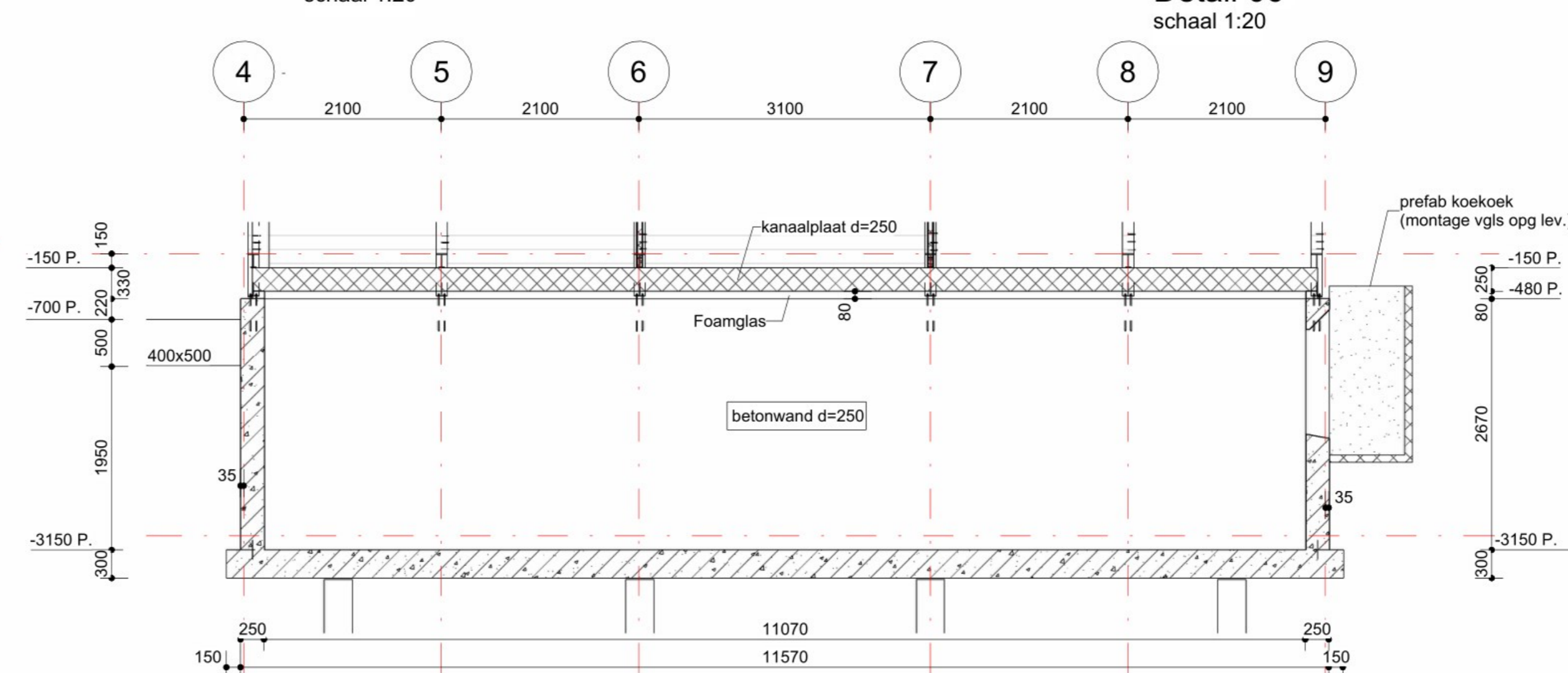


Detail 05
schaal 1:20

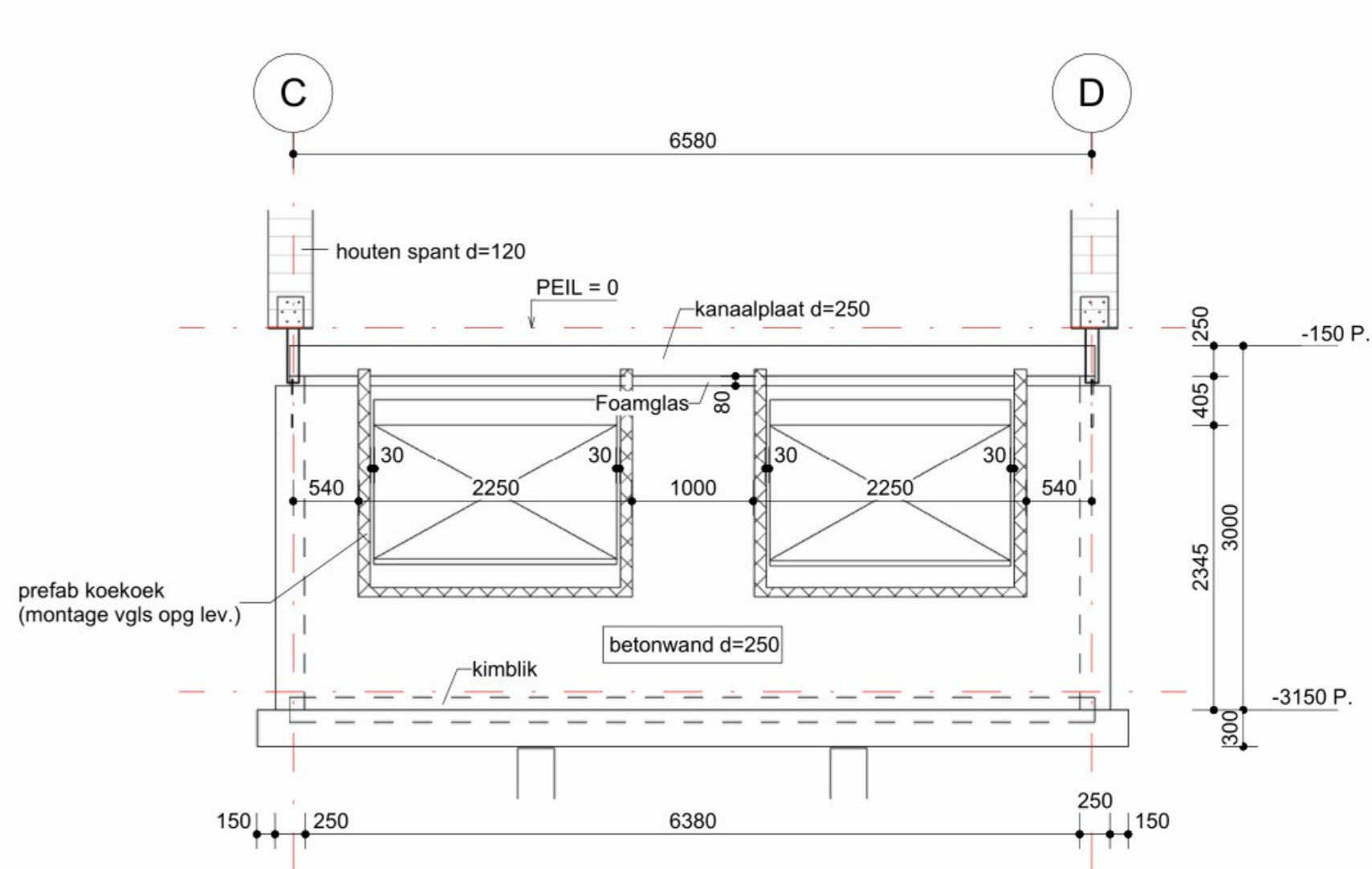


Detail 06
schaal 1:20

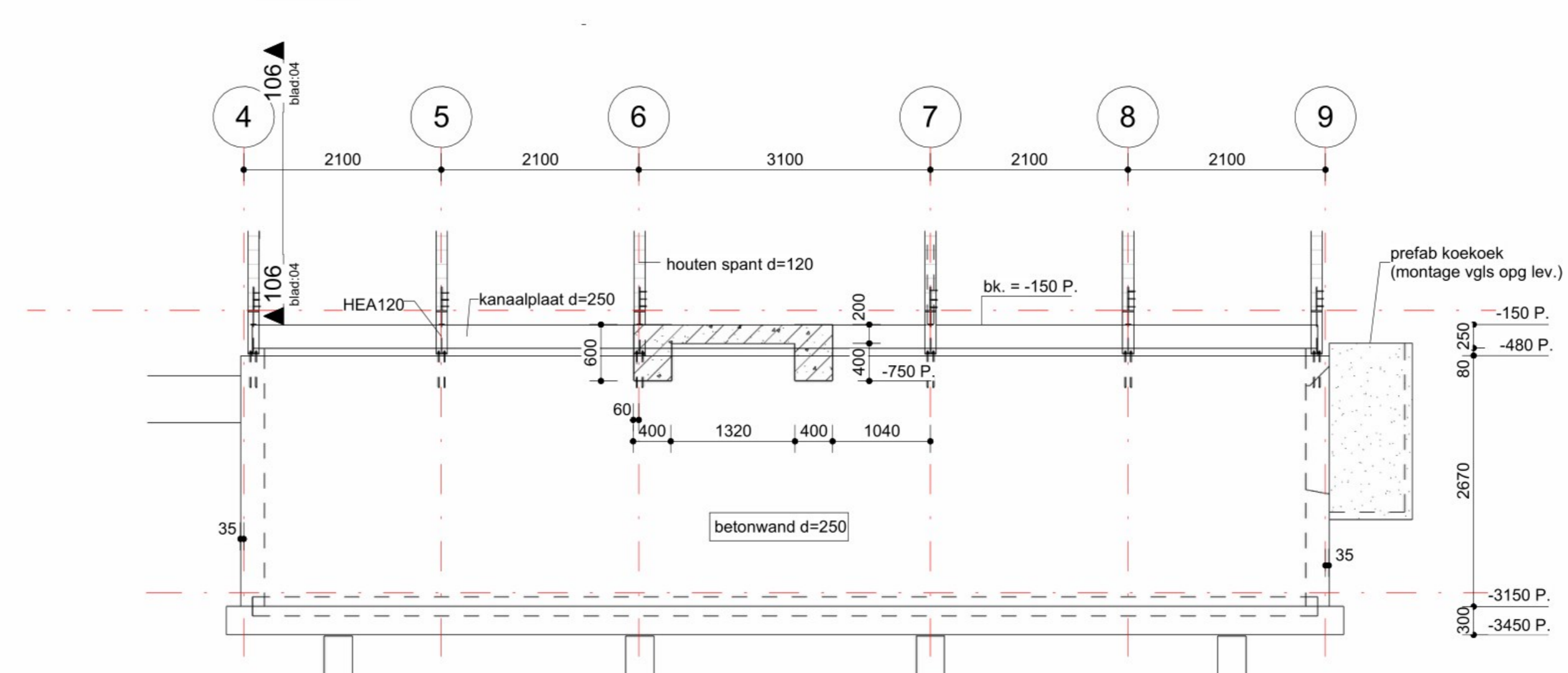
Detail 07
schaal 1:20



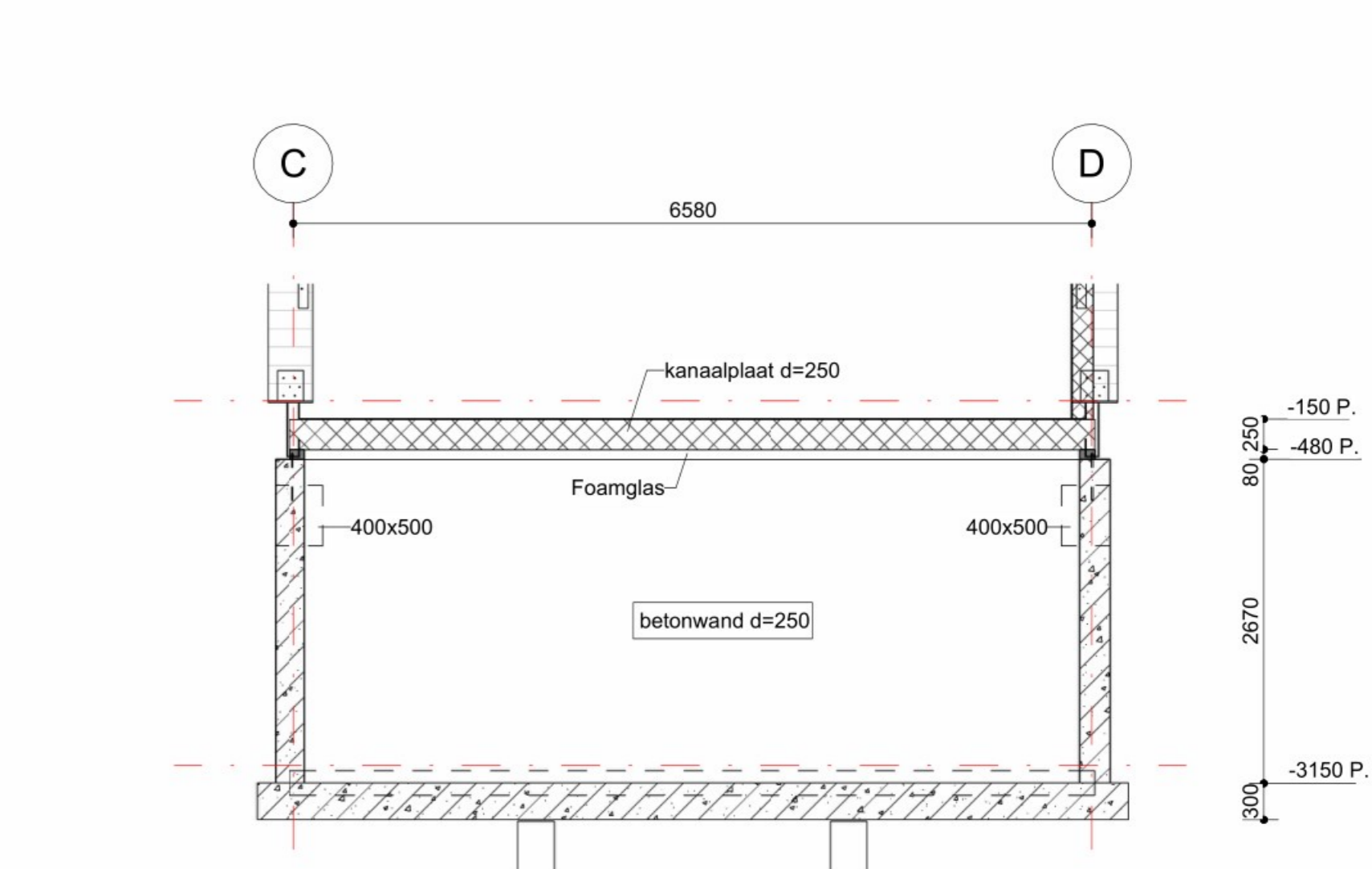
Betonwand B7
schaal 1:50



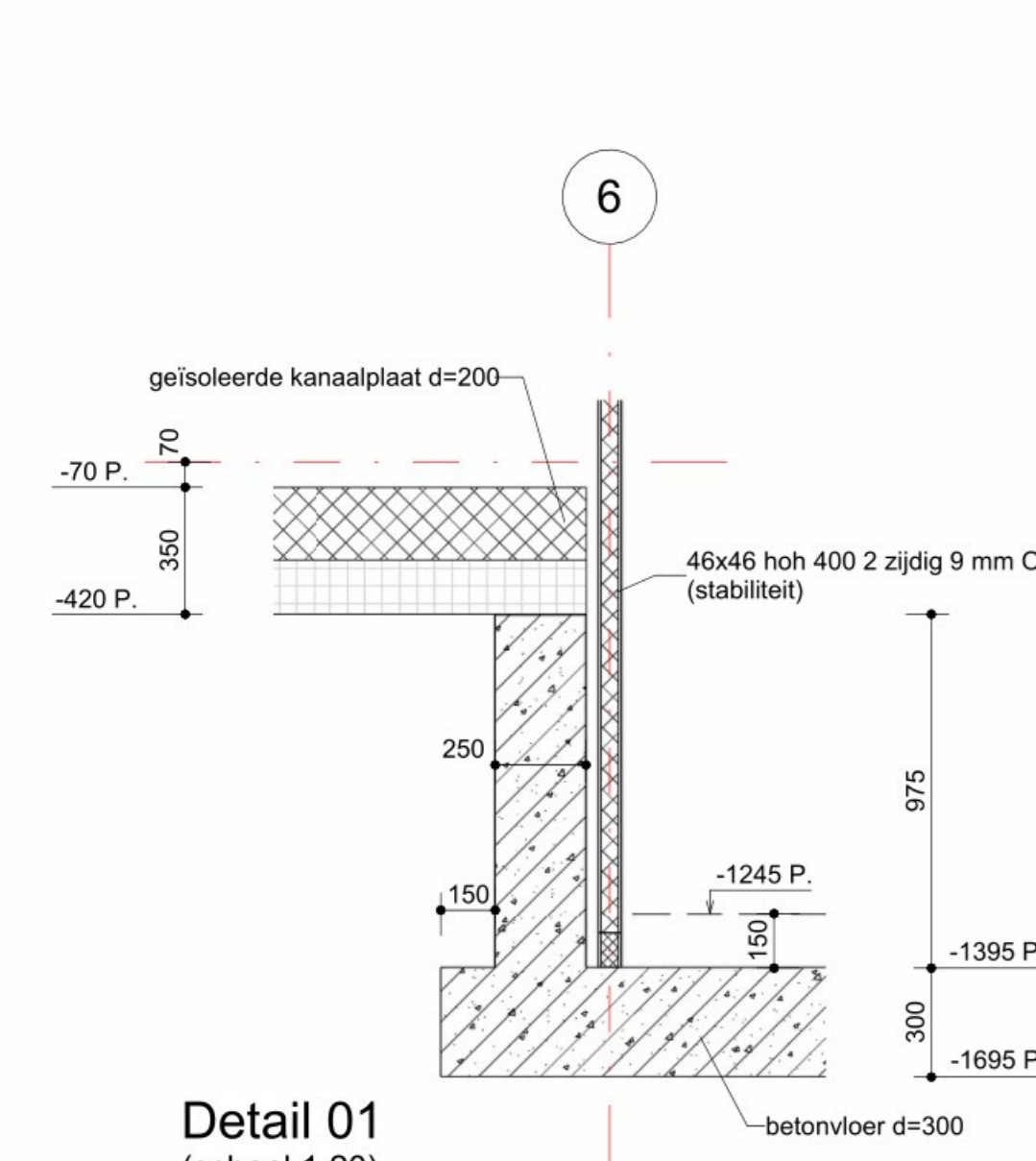
Betonwand B6
schaal 1:50



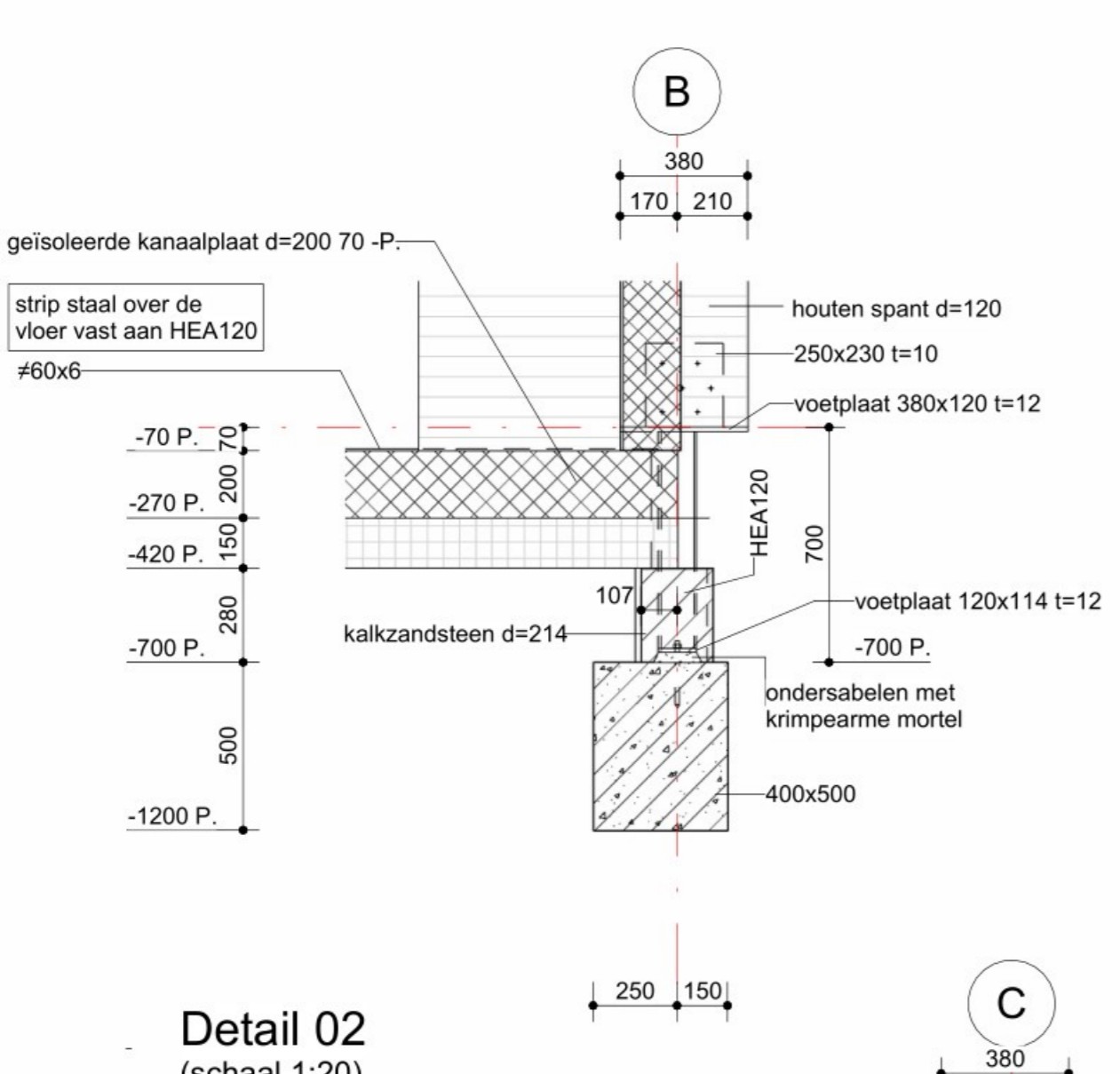
Betonwand B5
schaal 1:50



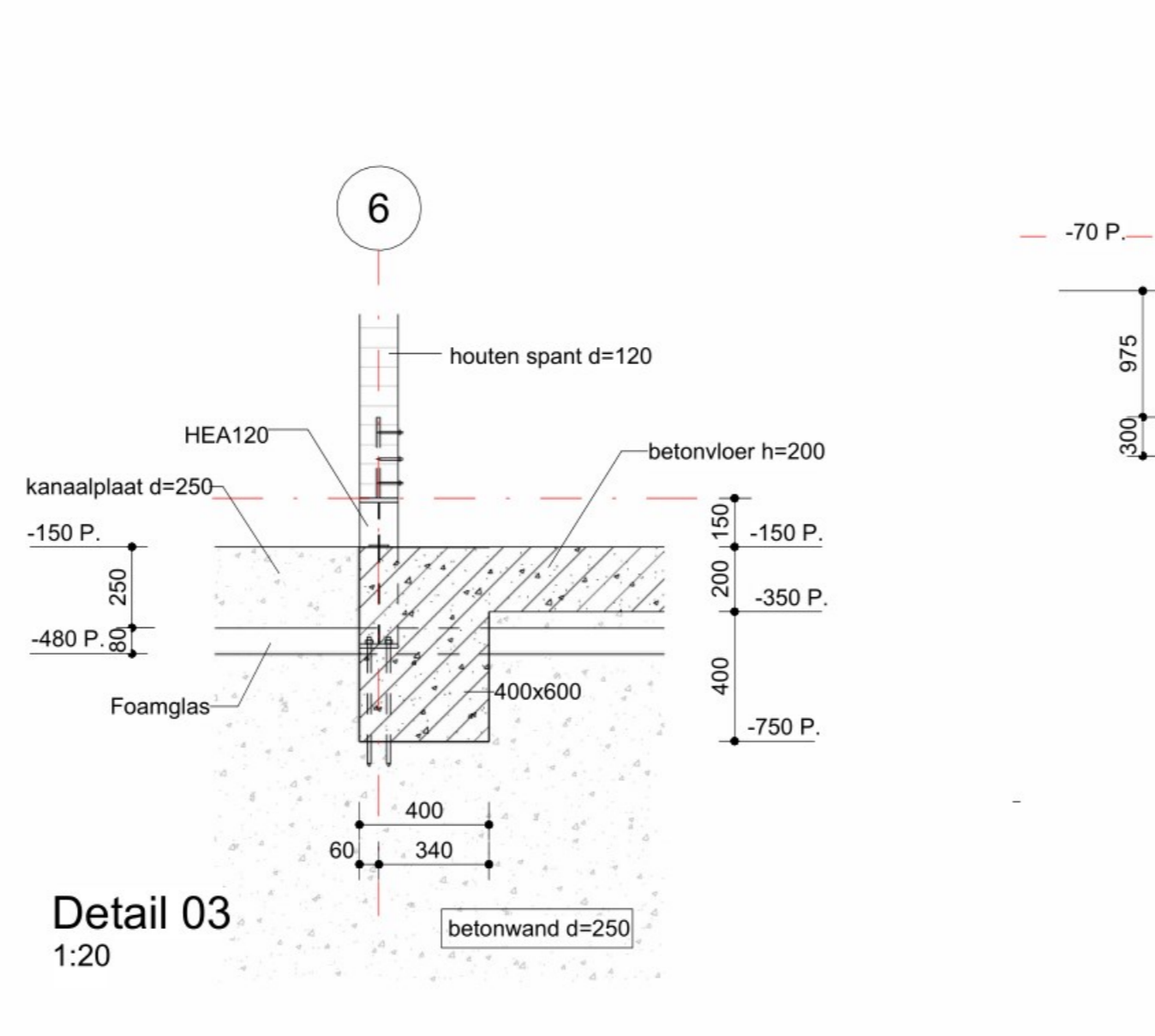
Betonwand B8
schaal 1:50



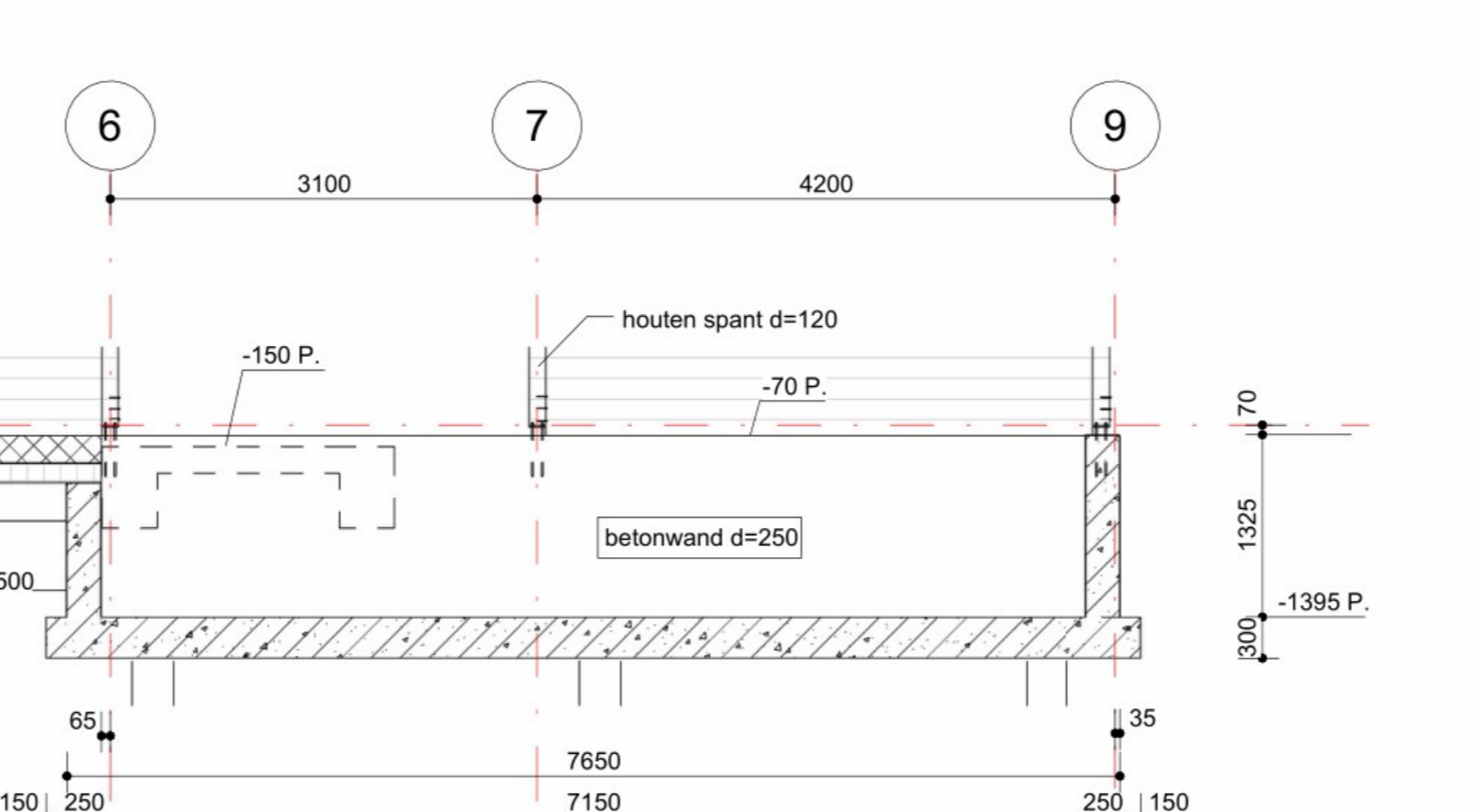
Detail 01
(schaal 1:20)



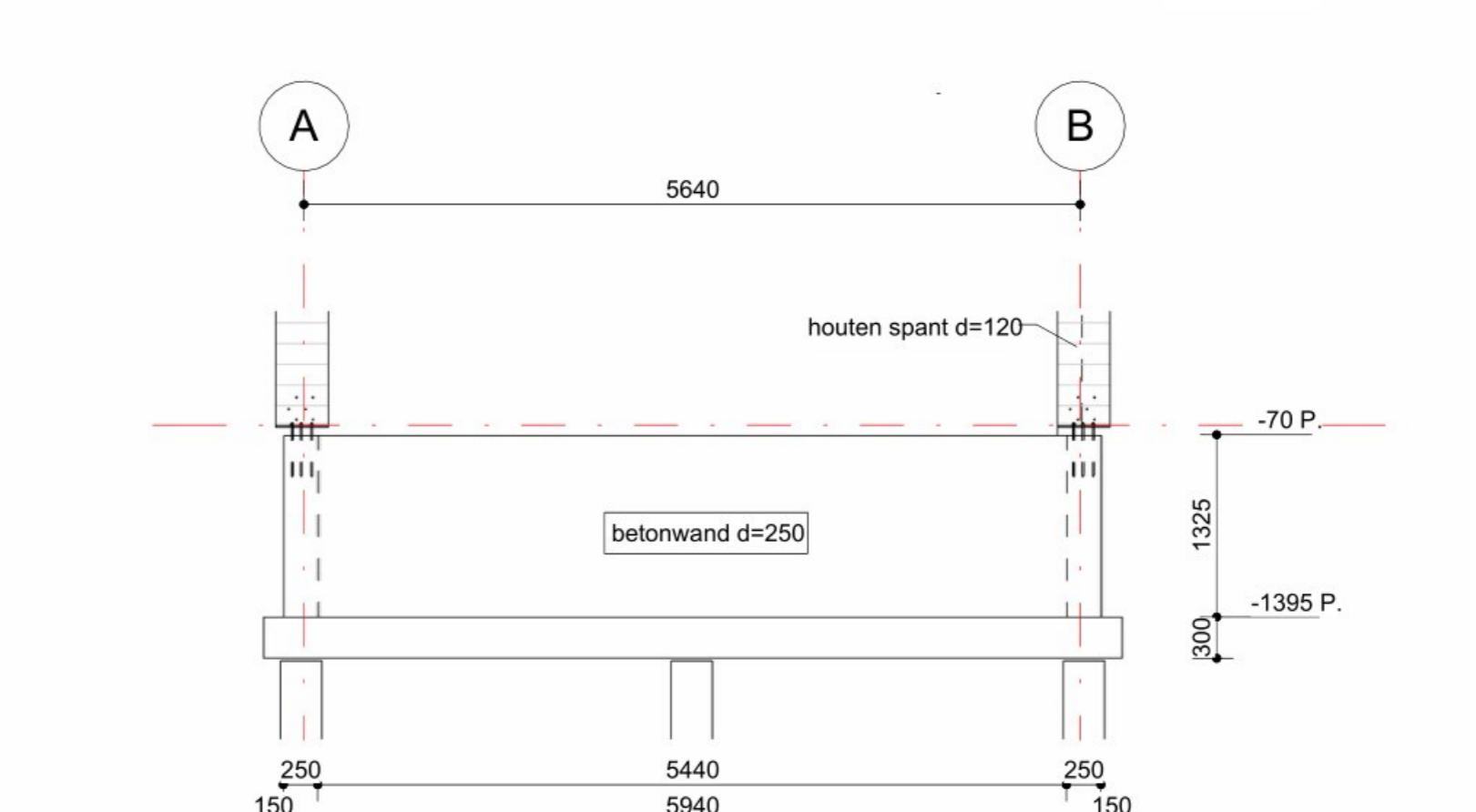
Detail 02
(schaal 1:20)



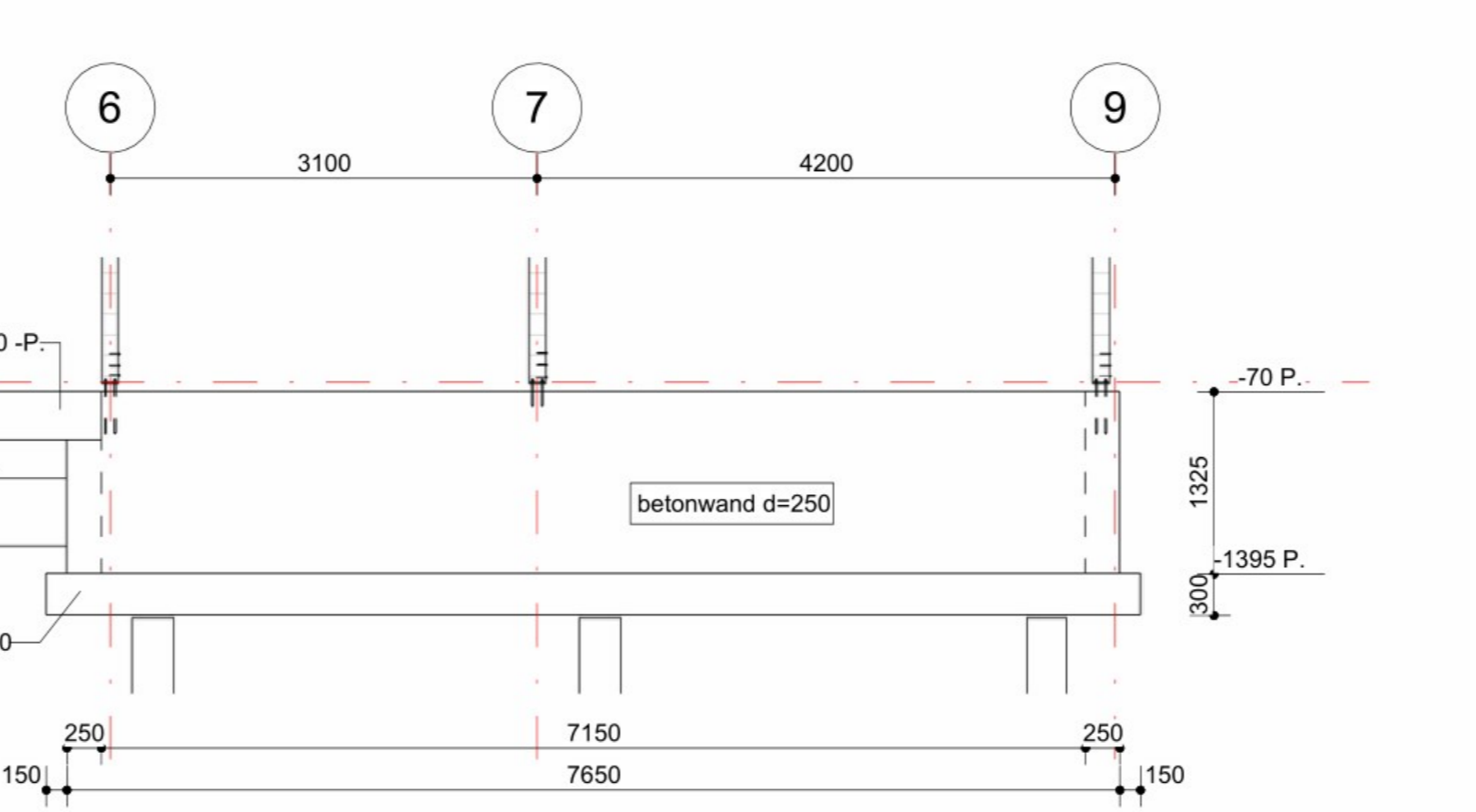
Detail 03
1:20



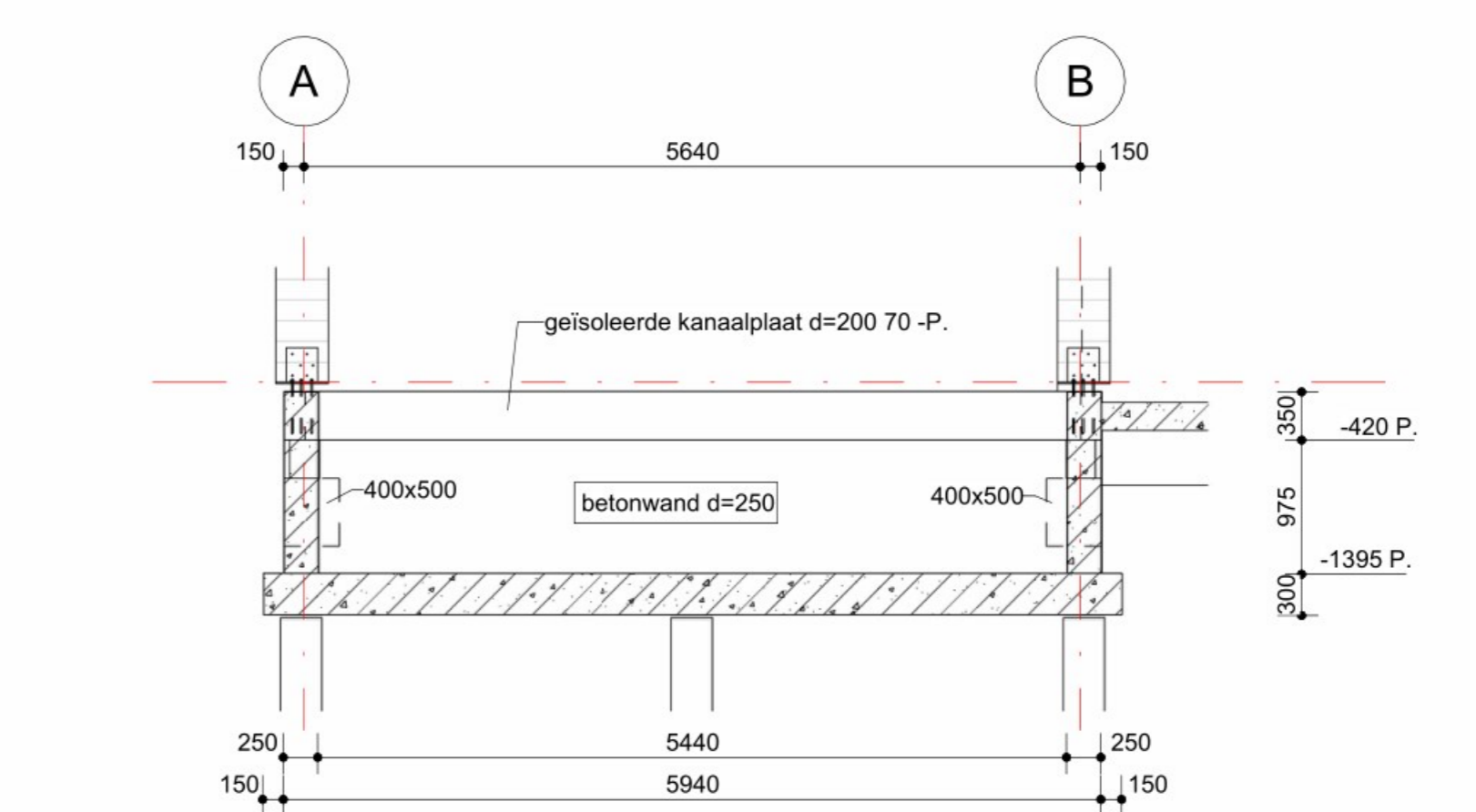
Betonwand B3
schaal 1:50



Betonwand B2
schaal 1:50



Betonwand B1
schaal 1:50



Betonwand B4
schaal 1:50

Betonwanden B5 t/m B7 uitvoeren met een kimblek o.g. Waterdichtheid te garanderen door aannemer.

Houtverbindingen door leverancier
Al het hout minimaal C24
Hout buiten overdekt beschouwd als klimaatklasse II

Staal buiten of in spouw thermisch verzinken en poedercoaten (2x 120 µ)

Beton kwaliteit : C30/37
Staal kwaliteit : B500B
Milieuklasse : XC2
Dekking o.b. : 35 mm.
Dekking flank : 35 mm.

h
g
f
e
d
c
b
a
d.d.

c. 24-02-2023 Aanpassing houten dakje en spantverbindingen
b. 13-01-2023 Wijziging stabiliteitswanden, opbouw dak bovenloop en balkon
a. 25-11-2022 Definitief
d.d. 27-10-2022 Ter controle

status: vvo-voorlopig d-definitief u-uitvoering ba-bouwaanvraag

Woonhuis Waalweg 1a
Rijssoord

Opdrachtgever: [Redacted]

Architect: Abrahamse de Kock architecten

Funderingsplan

bouwkundig adviesbureau
Baas bv. moolterhof 20 3952 VA rofferdam

getek. [Redacted] schaal 1:50 formaat: A0
werknr. 222015 blad: 02